

Mallet Daily Warm-Up #2

Major & Minor Scales - Flat Keys

Florian Kirchner

C-Dur/C major

Musical notation for C major scale, starting with a treble clef and a 4/4 time signature. The scale is written in a single line, with a repeat sign at the beginning. The notes are C, D, E, F, G, A, B, C. The piece concludes with a 2/4 time signature and a whole note C.

C-Moll natürlich/C natural minor

Musical notation for C natural minor scale, starting with a treble clef and a 4/4 time signature. The scale is written in a single line, with a repeat sign at the beginning. The notes are C, D, E-flat, F, G, A-flat, B-flat, C. The piece concludes with a 2/4 time signature and a whole note C.

C-Moll harmonisch/C harmonic minor

Musical notation for C harmonic minor scale, starting with a treble clef and a 4/4 time signature. The scale is written in a single line, with a repeat sign at the beginning. The notes are C, D, E-flat, F, G, A-flat, B-natural, C. The piece concludes with a 2/4 time signature and a whole note C.

C-Moll melodisch/C melodic minor

Musical notation for C melodic minor scale, starting with a treble clef and a 4/4 time signature. The scale is written in a single line, with a repeat sign at the beginning. The notes are C, D, E-flat, F, G, A-natural, B-natural, C. The piece concludes with a 2/4 time signature and a whole note C.

C-Dur - 2 Oktaven/C major - 2 octaves

Musical notation for C major scale - 2 octaves, starting with a treble clef and a 4/4 time signature. The scale is written in a single line, with a repeat sign at the beginning. The notes are C, D, E, F, G, A, B, C. The piece concludes with a 3/4 time signature and a whole note C.

Musical notation for C major scale - 2 octaves, starting with a treble clef and a 3/4 time signature. The scale is written in a single line, with a repeat sign at the beginning. The notes are C, D, E, F, G, A, B, C. The piece concludes with a 4/4 time signature and a whole note C.

F-Dur/F major

Musical notation for F major scale, starting with a treble clef and a 4/4 time signature. The scale is written in a single line, with a repeat sign at the beginning. The notes are F, G, A, B-flat, C, D, E, F. The piece concludes with a 2/4 time signature and a whole note F.

F-Moll natürlich/F natural minor

Musical notation for F natural minor scale, starting with a treble clef and a 4/4 time signature. The scale is written in a single line, with a repeat sign at the beginning. The notes are F, G, A, B-flat, C, D, E-flat, F. The piece concludes with a 2/4 time signature and a whole note F.

F-Moll harmonisch/F harmonic minor

Musical notation for F harmonic minor scale, starting with a treble clef and a 4/4 time signature. The scale is written in a single line, with a repeat sign at the beginning. The notes are F, G, A, B-flat, C, D, E-natural, F. The piece concludes with a 2/4 time signature and a whole note F.

F-Moll melodisch/F melodic minor

Musical notation for F melodic minor scale, starting with a treble clef and a 4/4 time signature. The scale is written in a single line, with a repeat sign at the beginning. The notes are F, G, A, B-flat, C, D, E-natural, F. The piece concludes with a 2/4 time signature and a whole note F.

F-Dur - 2 Oktaven/F major - 2 octaves

Musical notation for F major scale - 2 octaves, starting with a treble clef and a 4/4 time signature. The scale is written in a single line, with a repeat sign at the beginning. The notes are F, G, A, B-flat, C, D, E, F. The piece concludes with a 3/4 time signature and a whole note F.

Musical notation for F major scale - 2 octaves, starting with a treble clef and a 3/4 time signature. The scale is written in a single line, with a repeat sign at the beginning. The notes are F, G, A, B-flat, C, D, E, F. The piece concludes with a 4/4 time signature and a whole note F.

B-Dur/ B[♯] major



B-Moll natürlich/B[♯] natural minor



B-Moll harmonisch/B[♯] harmonic minor



B-Moll melodisch/B[♯] melodic minor



B-Dur - 2 Oktaven/B[♯] major - 2 octaves



Es-Dur/E[♯] major



Es-Moll natürlich/E[♯] natural minor



Es-Moll harmonisch/E[♯] harmonic minor



Es-Moll melodisch/E[♯] melodic minor



Es-Dur - 2 Oktaven/E[♯] major - 2 octaves



As-Dur/A^b major

Musical notation for the As-Dur/A major scale. It consists of two parts: a scale starting on A4 and a scale starting on A5. The notation includes treble clef, key signature of one flat (Bb), and various time signatures (4/4, 3/4, 2/4, 4/4). The first part is a quarter-note scale, and the second part is a triplet eighth-note scale.

As-Moll natürlich/A^b natural minor

Musical notation for the As-Moll natürlich/A natural minor scale. It consists of two parts: a scale starting on A4 and a scale starting on A5. The notation includes treble clef, key signature of two flats (Bb, Eb), and various time signatures (4/4, 3/4, 2/4, 4/4). The first part is a quarter-note scale, and the second part is a triplet eighth-note scale.

As-Moll harmonisch/A^b harmonic minor

Musical notation for the As-Moll harmonisch/A harmonic minor scale. It consists of two parts: a scale starting on A4 and a scale starting on A5. The notation includes treble clef, key signature of two flats (Bb, Eb), and various time signatures (4/4, 3/4, 2/4, 4/4). The first part is a quarter-note scale, and the second part is a triplet eighth-note scale.

As-Moll melodisch/A^b melodic minor

Musical notation for the As-Moll melodisch/A melodic minor scale. It consists of two parts: a scale starting on A4 and a scale starting on A5. The notation includes treble clef, key signature of two flats (Bb, Eb), and various time signatures (4/4, 3/4, 2/4, 4/4). The first part is a quarter-note scale, and the second part is a triplet eighth-note scale.

As-Dur - 2 Oktaven/A^b major - 2 octaves

Musical notation for the As-Dur - 2 Oktaven/A major - 2 octaves scale. It consists of two parts: a scale starting on A4 and a scale starting on A5. The notation includes treble clef, key signature of one flat (Bb), and various time signatures (4/4, 3/4, 2/4, 4/4). The first part is a quarter-note scale, and the second part is a triplet eighth-note scale.

Musical notation for the As-Dur - 2 Oktaven/A major - 2 octaves scale (triplet). It consists of two parts: a scale starting on A4 and a scale starting on A5. The notation includes treble clef, key signature of one flat (Bb), and various time signatures (3/4, 2/4, 4/4). The first part is a quarter-note scale, and the second part is a triplet eighth-note scale.

Des-Dur/D^b major

Musical notation for the Des-Dur/D major scale. It consists of two parts: a scale starting on D4 and a scale starting on D5. The notation includes treble clef, key signature of one flat (Bb), and various time signatures (4/4, 3/4, 2/4, 4/4). The first part is a quarter-note scale, and the second part is a triplet eighth-note scale.

Des-Moll natürlich/D^b natural minor

Musical notation for the Des-Moll natürlich/D natural minor scale. It consists of two parts: a scale starting on D4 and a scale starting on D5. The notation includes treble clef, key signature of two flats (Bb, Eb), and various time signatures (4/4, 3/4, 2/4, 4/4). The first part is a quarter-note scale, and the second part is a triplet eighth-note scale.

Des-Moll harmonisch/D^b harmonic minor

Musical notation for the Des-Moll harmonisch/D harmonic minor scale. It consists of two parts: a scale starting on D4 and a scale starting on D5. The notation includes treble clef, key signature of two flats (Bb, Eb), and various time signatures (4/4, 3/4, 2/4, 4/4). The first part is a quarter-note scale, and the second part is a triplet eighth-note scale.

Des-Moll melodisch/D^b melodic minor

Musical notation for the Des-Moll melodisch/D melodic minor scale. It consists of two parts: a scale starting on D4 and a scale starting on D5. The notation includes treble clef, key signature of two flats (Bb, Eb), and various time signatures (4/4, 3/4, 2/4, 4/4). The first part is a quarter-note scale, and the second part is a triplet eighth-note scale.

Des-Dur - 2 Oktaven/D^b major - 2 octaves

Musical notation for the Des-Dur - 2 Oktaven/D major - 2 octaves scale. It consists of two parts: a scale starting on D4 and a scale starting on D5. The notation includes treble clef, key signature of one flat (Bb), and various time signatures (4/4, 3/4, 2/4, 4/4). The first part is a quarter-note scale, and the second part is a triplet eighth-note scale.

Musical notation for the Des-Dur - 2 Oktaven/D major - 2 octaves scale (triplet). It consists of two parts: a scale starting on D4 and a scale starting on D5. The notation includes treble clef, key signature of one flat (Bb), and various time signatures (3/4, 2/4, 4/4). The first part is a quarter-note scale, and the second part is a triplet eighth-note scale.

Ges-Dur/G⁺ major



Ges-Moll natürlich/G⁺ natural minor



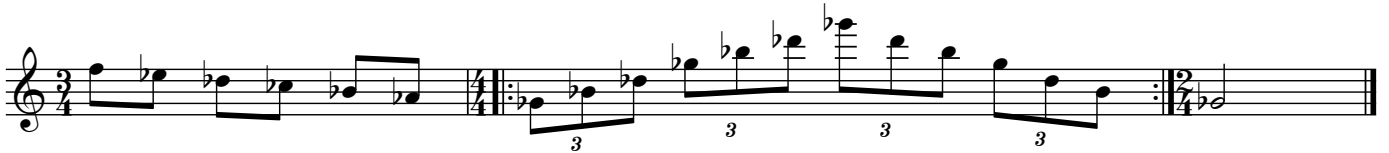
Ges-Moll harmonisch/G⁺ harmonic minor




Ges-Moll melodisch/G⁺ melodic minor



Ges-Dur - 2 Oktaven/G⁺ major - 2 octaves



 Website



 Instagram

